

PART OF SW 1/4 OF NE 1/4  
SECTION 20, T.6N., R.1W., S.L.B. & M.

114-1

TAXING UNIT: 25

IN OGDEN CITY  
SCALE 1" = 60'

SEE PAGE 114

CHILDS AVE.  
N0°58'0"E

12TH STREET

WOODBURY 12TH STREET  
SUBDIVISION  
SEE PAGE 260

ARBY'S 12TH  
COMMERCIAL SUBDIVISION  
SEE PAGE 246

LINCOLN AVE  
OGDEN CITY CORPORATION  
121140080

OGDEN CITY  
121140034

ROY TIPPETS &  
DALE TIPPETS  
121140037

BROOKSIDE TOWN HOMES  
SEE PAGE 183

DOUGLAS J WARREN & WF JILL A  
121140049

EDWIN LUSK  
121140048

LEWIS L HATHAWAY  
& WF LINDA M  
121140047

BRYAN MILLER  
& WF SHAYLA  
121140012

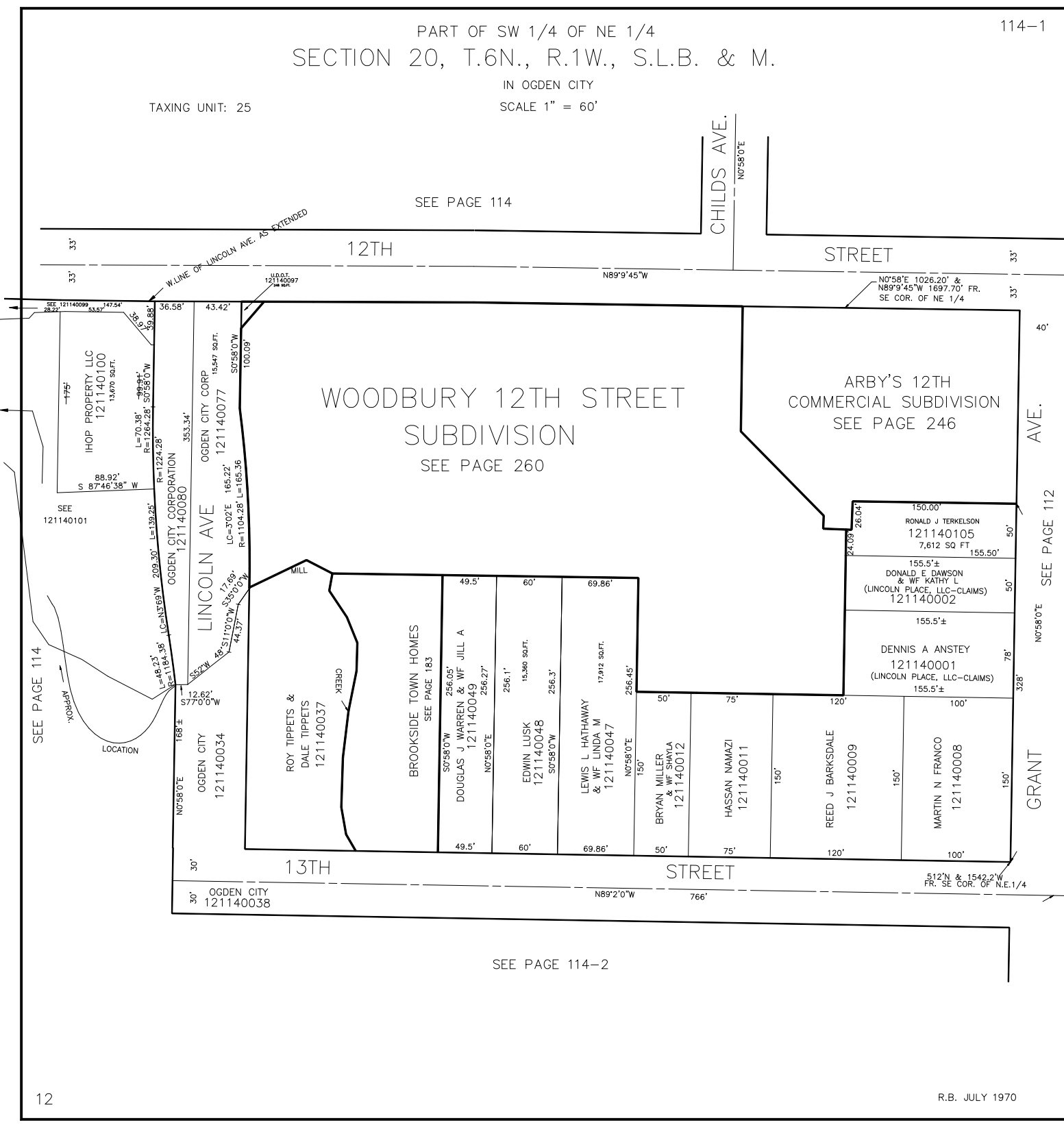
HASSAN NAMAZI  
121140011

REED J BARKSDALE  
121140009

MARTIN N FRANCO  
121140008

RONALD J TERKELSON  
121140105  
7,612 SQ FT

DENNIS A ANSTEY  
121140001  
(LINCOLN PLACE, LLC-CLAIMS)



SEE PAGE 114-2